

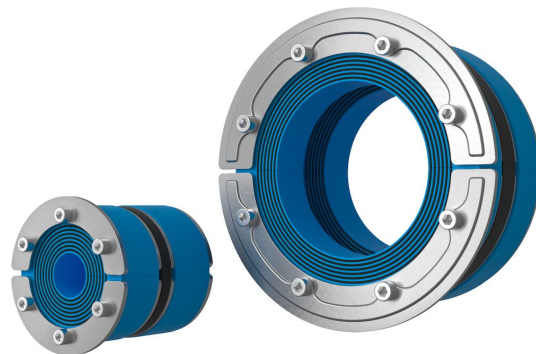


Etanșare Roxtec RS PPS/S

Etanșare cu greutate redusă pentru țevi din plastic, cu instalare de pe o singură parte.

Roxtec RS PPS/S este o etanșare pentru țevi din plastic instalate în zone rezistente la foc, cum ar fi punțile sau pereții metalici despărțitori. Etanșarea asigură blocarea completă a fumului, flăcărilor și apei în caz de incendiu și este aprobată pentru instalare de pe o singură parte. Soluția poate fi ajustată la țevi de diferite dimensiuni datorită straturilor detașabile. Pentru țevi din plastic de până la 119 mm.

- Cu greutate redusă
- Rapid și ușor de instalat
- Se adaptează la cabluri și țevi de diferite dimensiuni



Caracteristicile produsului



Certificată la foc



Etanșă la apă



Etanșă la gaze

Structura instalației



Metal



Beton

Tip de montaj



Gol existent



Piesă de trecere existentă

Clase și certificate

Foc

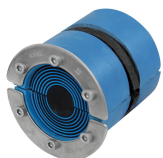
- CLASA A conform Codului FTP IMO 2010
- Clasificare E/EI conform EN 45545 E60

Etanșeitate

- Gaz: 2 bari (catastrofică)
- Apă: 4 bari (catastrofică)

Date componente de etanșare

Componente de etanșare



Etanșare RS PPS/S



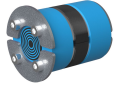
Lubrifiant Roxtec

Pentru mai multe informații, vă rugăm să vizitați [roxtec.com](https://www.roxtec.com).

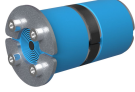


Kituri de treceri preconfigurate

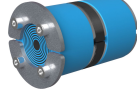
mm/kg



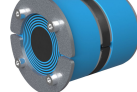
RS PPS/S 31 AISI316



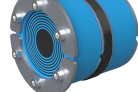
RS PPS/S 43 AISI316



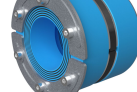
RS PPS/S 50 AISI316



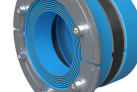
RS PPS/S 68 AISI316



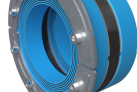
RS PPS/S 75 AISI316



RS PPS/S 100 AISI316
WOC



RS PPS/S 125 AISI316
WOC



RS PPS/S 150 AISI316
WOC

Titlu	Configurație	Dimensiuni deschidere Ø	Greutate	Nr. art.
RS PPS/S 31 AISI316	1x (4.0-17.0)	31 - 32	0.09	PPSS000003121
RS PPS/S 43 AISI316	1x (4.0-23.0)	43 - 45	0.29	PPSS000004321
RS PPS/S 50 AISI316	1x (8.0-30.0)	50 - 52	0.37	PPSS000005021
RS PPS/S 68 AISI316	1x (26.0-48.0)	68 - 70	0.6	PPSS000006821
RS PPS/S 75 AISI316	1x (24.0-54.0)	75 - 77	0.6	PPSS000007521
RS PPS/S 100 AISI316 WOC	1x (48.0-70.0)	100 - 102	0.8	PPSS000010021
RS PPS/S 125 AISI316 WOC	1x (66.0-98.0)	125 - 127	1.4	PPSS000012521
RS PPS/S 150 AISI316 WOC	1x (93.0-119.0)	150 - 152	1.6	PPSS000015021

The product information provided by Roxtec does not release the purchaser of the Roxtec system, or part thereof, from the obligation to independently determine the suitability of the products for the intended process, installation and/or use.

Roxtec gives no guarantee for the Roxtec system or any part thereof and assumes no liability for any loss or damage whatsoever, whether direct, indirect, consequential, loss of profit or otherwise, occurred or caused by the Roxtec systems or installations containing components not manufactured by an authorized manufacturer and/or occurred or caused by the use of the Roxtec system in a manner or for an application other than for which the Roxtec system was designed or intended.

Roxtec expressly excludes any implied warranties of merchantability and fitness for a particular purpose and all other express or implied representations and warranties provided by statute or common law. User determines suitability of the Roxtec system for intended use and assumes all risk and liability in connection therewith. In no event shall Roxtec be liable for indirect, consequential, punitive, special, exemplary or incidental damages or losses.

The Roxtec products are offered and sold in accordance with the conditions of the Roxtec General Terms of Sales. The latest version of the Roxtec General Terms of Sales can be downloaded from <https://www.roxtec.com/en/about-us/about-roxtec/general-terms-of-sales/>

We reserve the right to make changes to the product and technical information without further notice. Any errors in print or entry are no claims for indemnity. The content of this publication is the property of Roxtec International AB and is protected by copyright.

This document was generated on: 2024-04-06